

Technique Creates Beauty

# MED-340Pro

Cryolipolysis Fat Reduction Slimming Machine



F  
A  
S  
T  
S  
E  
R  
V  
I  
C  
E  
A  
N  
D  
B  
E  
S  
T  
V  
A  
L  
U  
E





## **MED- 340Pro**

**Cryolipolysis + Vacuum + LED**

Ultra-Safe Soft Silicone Contact Cooling Technology, no frostbite risk compared with Metal Contact Cooling.

Cooling Plates: Four cooling plates bring stable cooling effects.

Touch Screen:  
Real-time temperature & time monitoring,  
Ready & Standby button for convenient operation.



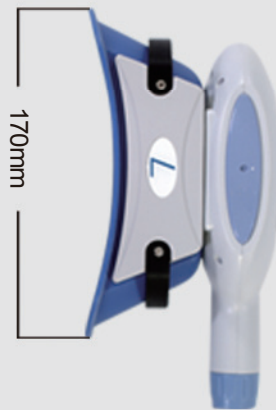
## Application



**BIG HANDLE**

210\*60\*55 mm

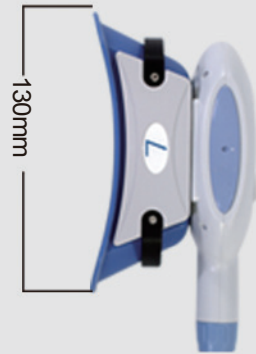
Big Handle (optional) provides solution for particularly obese parts, removing the fat fastly.



**MIDDLE HANDLE**

170\*60\*55 mm

Middle Handle (Standard configuration) gives treatment for whole body, perfect solution for belly, butt and legs.



**SMALL HANDLE**

130\*60\*55 mm

Small Handle (optional) especially offers effective treatment for small area of the body

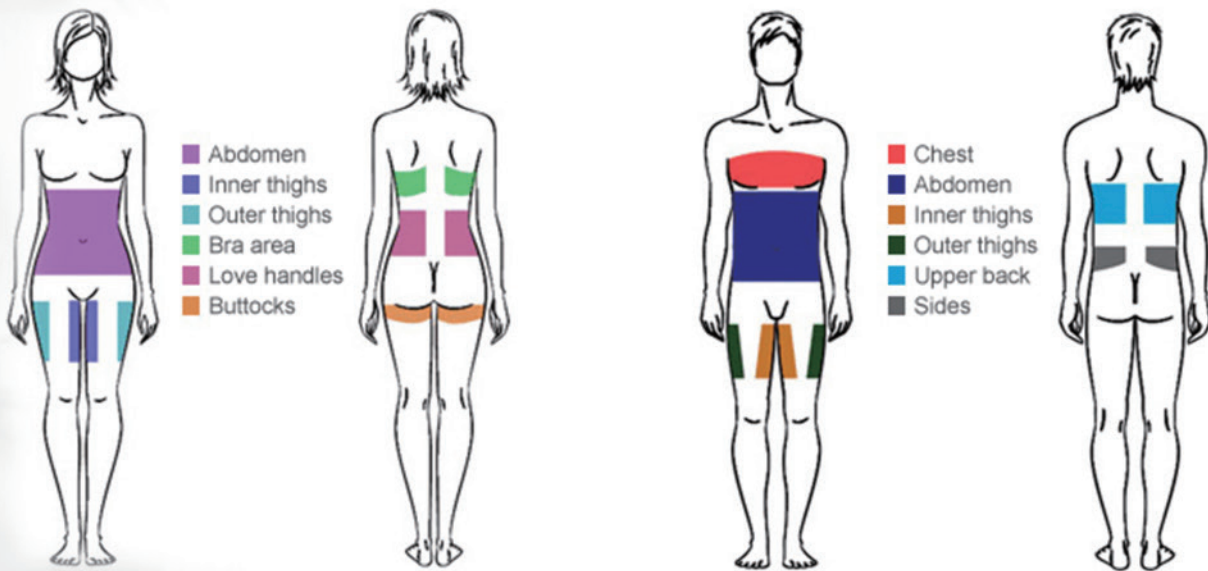


Technique Creates Beauty

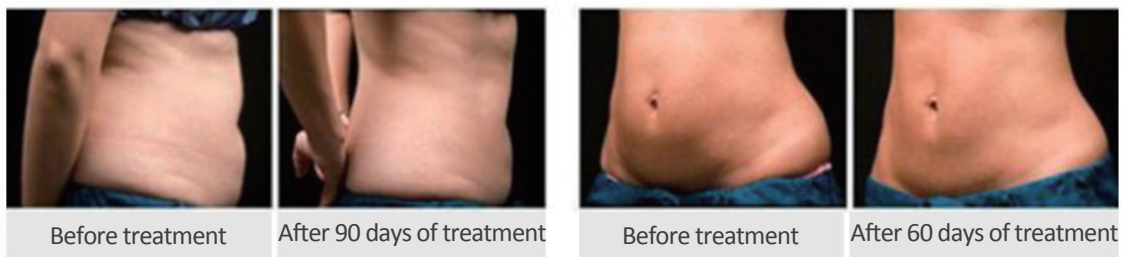
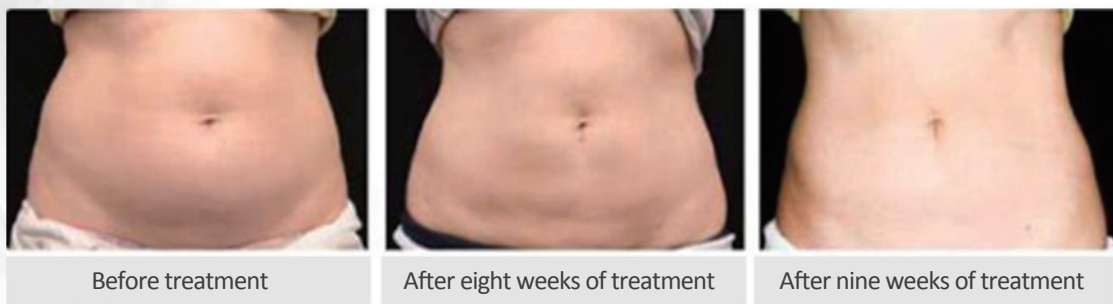
F  
A  
S  
T  
S  
E  
R  
V  
I  
C  
E  
A  
N  
D  
B  
E  
S  
T  
V  
A  
L  
U  
E

## ■ Proven Clinical Results

The equipment adopts advanced cryolipolysis technology. Triglyceride of fat will be converted to the solid (crystalline) at a low temperature of 4-5 degree; Solid triglyceride aging in advance; Normal metabolism makes aging solid triglyceride to be excreted out of body, to get a result of weight loss.



## ■ Before and After

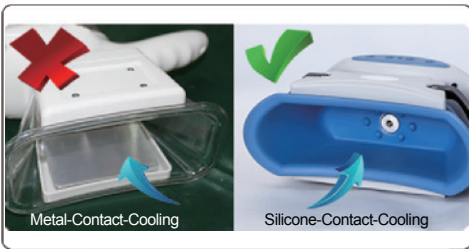


Technique Creates Beauty

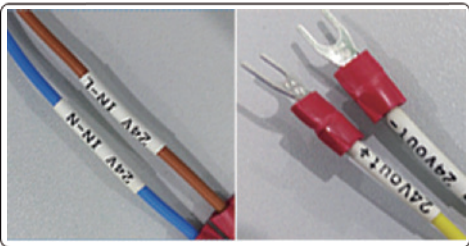
## Advantages of Cryolipolysis



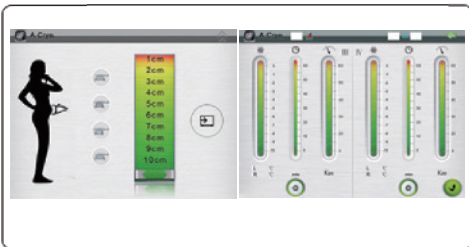
1. Four handles work together  
Guarantee treatment results and decrease 50% treatment time.



2. Unique Silicone-Contact-cooling  
Silicone-Contact-Cooling plus Real-Time temperature calibration. Double safe guarantee and more effective. Say goodbye to Metal-Contact-Cooling which with high burning risk.



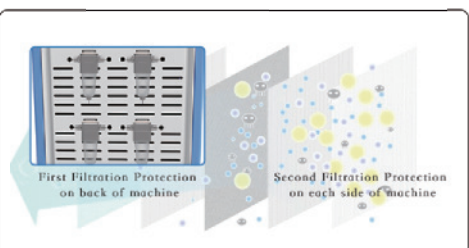
3. Safe Wiring Design  
Identified wiring and Plug & Play connector for easy recognition and fast maintenance



4. Intelligent Software, convenient operation  
Select fat thickness, parameters auto set  
Four handpieces controlled separately



5. Independent Modular Design  
Modular design ensure easy and convenient maintenance. Independent water and electrical circulation avoid short circuit caused by water leakage



6. Double Filtration Protection  
First Filtration Protection on back of machine. Second Filtration Protection on each side of machine. Extend machine lifetime and ensure convenient maintenance

# Technique Specification

<b>Model NO.</b>	<b>Med-340Pro</b>
<b>Power</b>	<b>1200W</b>
<b>Focused Technology</b>	<b>Cryolipolysis + Vacuum + LED</b> <b>Total 4;</b>
<b>Handpiece</b>	<b>2 x Middle (170*60*55mm)</b> <b>1 x Big (210*60*55mm)</b> <b>1 x Small (130*60*55mm)</b>
<b>Cooling Stand-by Working</b>	<b>-10°C~ 0°C Continuous contact cooling</b>
<b>Vacuum pressure</b>	<b>Level 1~10 adjustable</b>
<b>Display</b>	<b>10.4" True Color LCD Touch Screen</b>
<b>Net Weight</b>	<b>68 KG</b>
<b>Dimensions</b>	<b>480*420*1050mm</b>